

# CHEVY LUV SERIES 9

*Polonia Service Garage, Inc.*  
7456 COUNTY Z  
POLONIA, WIS. 54423



**BUILT TO STAY TOUGH.**



# Tough, versatile



*Chevy LUV—7 1/2-foot box*



## Chevy LUV. The tough half-tonner.

LUV's regular 6-ft.-box model features a soft-riding suspension and a GVW rating of 3550 lbs., for payloads up to 1125 lbs. Long-box LUV, which provides a full 7½ feet of load space, has the longest cargo box of any small-size pickup. Its GVWR of 4150 lbs. lets it carry payloads up to 1635 lbs. including driver, passenger, equipment and cargo.

## Tough 80-hp overhead-cam engine.

LUV's 4-cylinder, 1.8 Litre (110.8 Cu. In.) in-line engine has a cast aluminum head and five tri-metal, steel-backed main bearings. The single overhead camshaft has dual rocker arms with crossflow-designed ports for intake and exhaust. Combustion chambers are hemispherical.

**Soft-riding suspension.** The Series 9 LUV features a soft suspension on regular 6-ft.-box pickup models. Torsion bar

independent front suspension helps soak up road jolts while standard stabilizer bar aids roll stability. Four-leaf, two-stage rear springs and decreased spring rate contribute to riding smoothness and give LUV a low road stance.



Standard all-vinyl interior features a full-width foam-padded bench seat, embossed door trim panels, color-keyed floor mats. Behind the seat there's a convenient storage area.

*A word about this catalog: We have tried to make this catalog as comprehensive and factual as possible. And we hope you find it helpful. However, since the time of printing, some of the information you'll find here may have been updated. Your dealer has details and, before ordering, you should ask him to bring you up to date.*



*Chevy LUV—6-foot box*

*Many vehicles in this catalog are shown with available factory-installed options, dealer accessories and specialized equipment from various independent suppliers.*

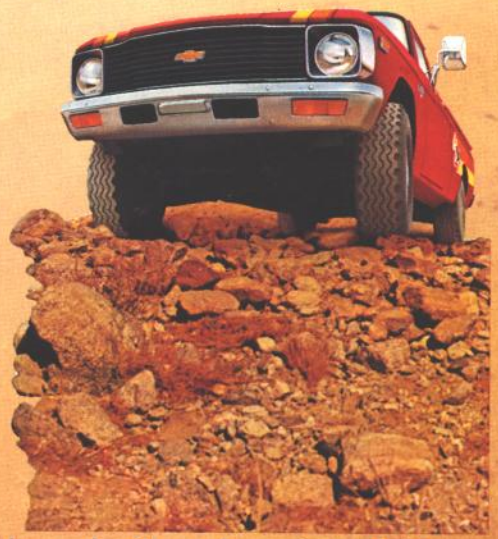


*Chevy LUV 4x4 with available Decal Package*





# New 4WD Chevy LUV



A great way to get into the back country. Light, nimble Chevy LUV 4x4 has a 4-speed, fully synchronized manual transmission with a choice of Hi and Lo 4WD positions. The transfer case is combined with the transmission in a single unit and each is operated by a separate shift lever. Manual locking hubs are an additional standard feature of the system.

**High ground clearance.** New LUV 4x4 offers 7.5-in. ground clearance, but keeps a low profile by maintaining a stance that is only 1½ in. higher than LUV 2WD. It also features better approach and ramp angles than some larger trucks.

**Independent front suspension.** LUV 4x4's suspension is of the independent type, utilizing upper and lower control arms, ball-type joints and torsion bar springs. Direct double-acting front shock absorbers and a stabilizer bar are included. Rear suspension features semi-elliptic, rubber-bushed, leaf-type springs and direct double-acting shock absorbers.

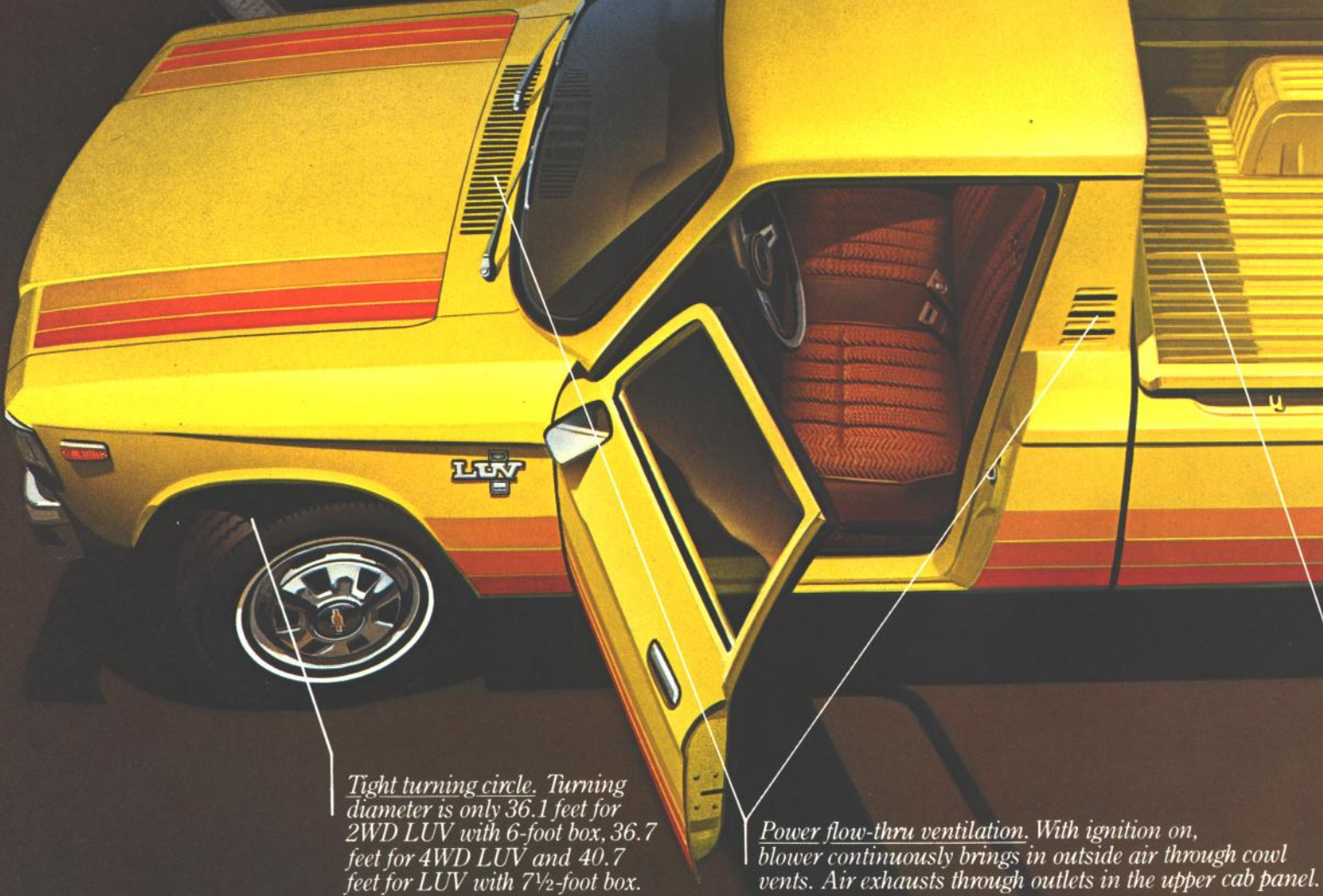
**Other features.** 14-in. x 5½-in. styled wheels and white-lettered F70x14B bias-belted, all-terrain tires are standard. Also standard are the 4x4 decal on the tailgate and a new assist grip above the door on the right interior. Available options include a factory-installed Skid Plate Package and a special 4x4 Decal Package (shown on the truck at left above).



Instrument panel shown below is part of the  
Truck is Chevy LUV



*Attractive  
instrument cluster.  
Gages are easily read,  
controls easily reached.  
Panel itself is foam  
padded and vinyl  
covered.*



*Tight turning circle. Turning  
diameter is only 36.1 feet for  
2WD LUV with 6-foot box, 36.7  
feet for 4WD LUV and 40.7  
feet for LUV with 7½-foot box.*

*Power flow-thru ventilation. With ignition on,  
blower continuously brings in outside air through cowl  
vents. Air exhausts through outlets in the upper cab panel.*

# Tough enough to b



of the available Mikado interior. Radio and air conditioning are separate options. LUV with available LUV Sport Decal Package and Mikado bench-seat interior.



*4-speed manual transmission. A fully synchronized 4-speed manual transmission comes standard. An automatic transmission is available.*

*All-steel construction. Frame is constructed of box-section steel side rails with six heavy-duty cross members. Welded steel cab is bolted to the frame in biscuit-type mounts to help absorb noises and vibration.*



*All-steel pickup box. The all-steel 6-foot box is mounted to frame on ten heavy-gage welded brackets. The all-steel 7½-foot box is mounted with 12.*

*Brakes. Self-adjusting, single-cylinder floating caliper disc brakes are standard up front. Power vacuum assist is also standard. In the rear, brakes are self-adjusting duo-servo drum type.*

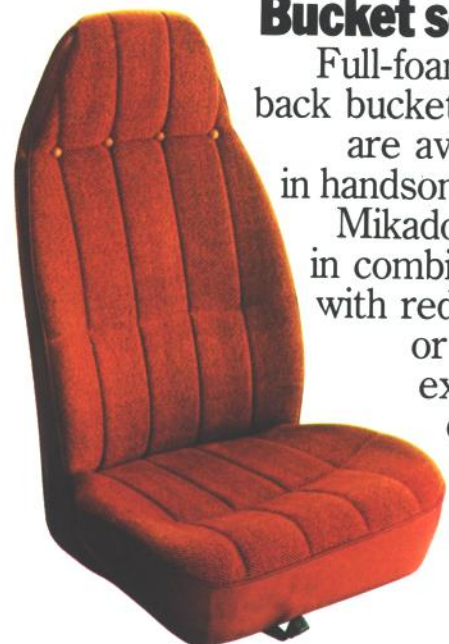
# Be a Chevy

**Available options.** Chrome or painted rear step bumper ■ LUV Sport Decal Package (shown at left). Available on both 2WD and 4WD Chevy LUVs ■ Decor Package (includes bright beltline moldings, roof drip moldings, windshield and rear window moldings, chromed wheel discs or hub-caps) ■ Automatic transmission (not available on LUV 4x4) ■ Factory-installed air conditioning ■ Sliding rear window ■ AM or AM/FM push-button radio ■ E78-14B bias-belted whitewall tires ■ Front bumper guards ■ Mud flaps\* ■ Below Eyeline mirrors ■ Right-hand exterior mirror\* ■ Fuel tank, lower radiator tank and transfer case skid plate package for 4WD LUV ■ 4x4 Decal Package.

**Mikado.** LUV's most luxurious interior option. Full-width seats in luxurious blue, saddle or red cloth (shown at left); matching door inserts; carpeted floor and leather-like-vinyl-covered 3-spoke steering wheel and gearshift knob.

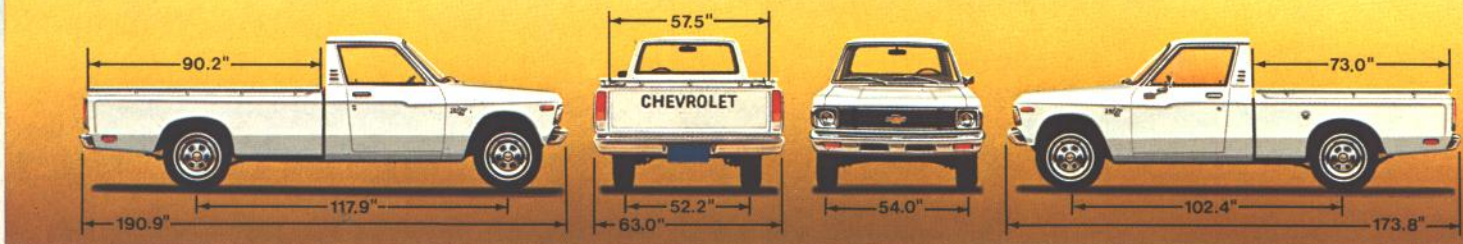
### Bucket seats.

Full-foam high-back bucket seats are available in handsome red Mikado cloth in combination with red, black or white exterior colors.



\*Dealer-installed accessory





## LUV Series 9 specifications

MODELS	(2WD)	(4WD)
WHEELBASE (in.)	102.4/117.9	102.4
GVWR (lbs.)	3550/4150	3750
CURB WEIGHT (lbs.)	2425/2515	2585
GROSS PAYLOAD (lbs.)*	1125/1635	1165
ENGINE—TYPE	OHC-4 CYL.	
DISPLACEMENT	1.8 Litre (110.8 Cu. In.)	
NET H.P. (SAE)	80 @ 4800	
NET TORQUE (SAE)	95 @ 3000	
COMP. RATIO	8.5 TO 1	
ELECTRICAL—BATTERY 12V	50 AMP	
ALTERNATOR	35 AMP	
TRANSMISSION—STD.	4-SPEED	4-SPD
AVAIL.	AUTOMATIC	—
BRAKES—FRONT	DISC. 9.84" ROTOR	
REAR	DRUM 10" DIAMETER	
BOOSTER	POWER ASSIST	
FRONT SUSPENSION—TYPE	INDEPENDENT TORSION BAR	FRONT DRIVING AXLE, TORSION BAR
STABILIZER BAR	STD.	
SHOCK ABSORBERS	1" DIAMETER	
REAR SUSPENSION—TYPE	HYPOID, LEAF SPRINGS	
AXLE CAPACITY (LBS.)	3500	
AXLE RATIO—MANUAL	3.73	4.10
—AUTOMATIC	4.10	—
SHOCK ABSORBERS	1" DIAMETER	
FUEL TANK—NOMINAL CAP.	13 GALLONS	
STEERING	VARIABLE RATIO	
TURNING DIAMETER (FT.)	36.1/40.7	36.7
TIRES	(5) E78-14B	(5) F70-14B W. LETTERED
WHEELS	14" x 5"	14" x 5.5"
FRAME	LADDER TYPE	

\*INCLUDES OCCUPANTS, EQUIPMENT, AND CARGO

SEPTEMBER, 1978



### Interiors:

The standard vinyl bench-seat interior can be ordered in Blue (shown above left) or Saddle.

The available Mikado cloth bench seat can be ordered in Blue, Saddle and Red (shown above right). Bucket seats available in Red Mikado cloth only.

### Exterior colors:

Crimson Red ■ Jasmine Yellow ■ Light Blue ■ Strato White ■ Black

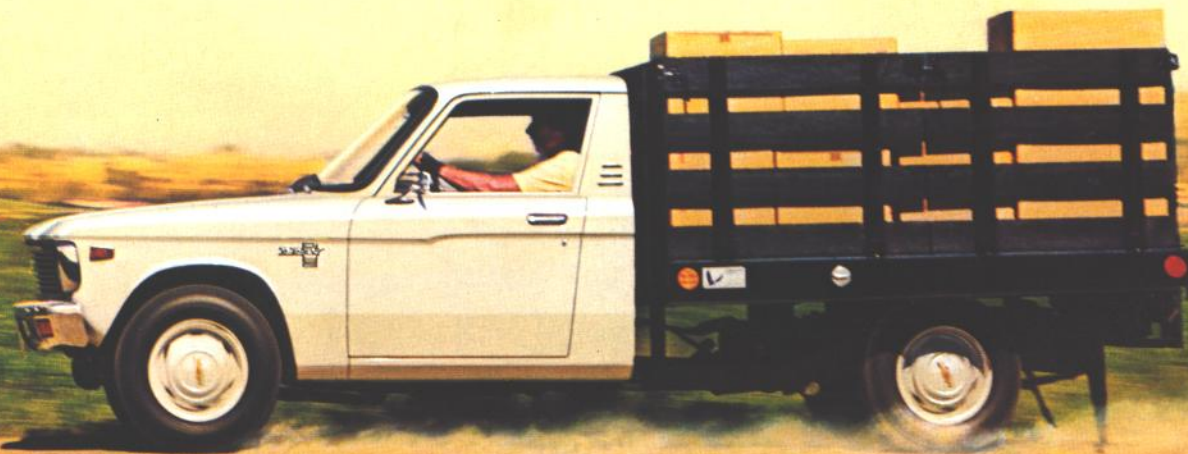
Your dealer can tell you which interiors are available with the exterior color you select.

The right is reserved to make changes at any time in prices, colors, materials, equipment, specifications and models, and also to discontinue models. Chevrolet Motor Division of General Motors Corporation, Detroit, Michigan 48202. Litho in U.S.A.

### A WORD ABOUT ASSEMBLY, COMPONENTS AND OPTIONAL EQUIPMENT IN THESE CHEVY LUVS

The Chevy LUVs described in this catalog are assembled at facilities of Isuzu Motors Limited, Japan. These vehicles incorporate thousands of different components produced by various suppliers to Isuzu. From time to time during the manufacturing process, it may be necessary, in order to meet public demand for particular vehicles or equipment, or to meet federally mandated emissions, safety and fuel economy requirements, or for other reasons, to produce Chevy LUVs with different components or differently sourced components than initially scheduled.

With respect to extra cost optional equipment, make certain you specify the type of equipment you desire on your vehicle when ordering it from your dealer. Some options may be unavailable when your vehicle is built. Your dealer receives advice regarding current availability of options. You may ask the dealer for this information. GM also requests the dealer to advise you if an option you ordered is unavailable. We suggest you verify that your vehicle includes the optional equipment you ordered or, if there are changes, that they are acceptable to you.



Chevy LUV Chassis Cab with stake body shown here. LUV Chassis Cabs are available in 102.4-in. wheelbase. GVWR—3930 lbs. Total completed curb weight cannot exceed 2950 lbs.

